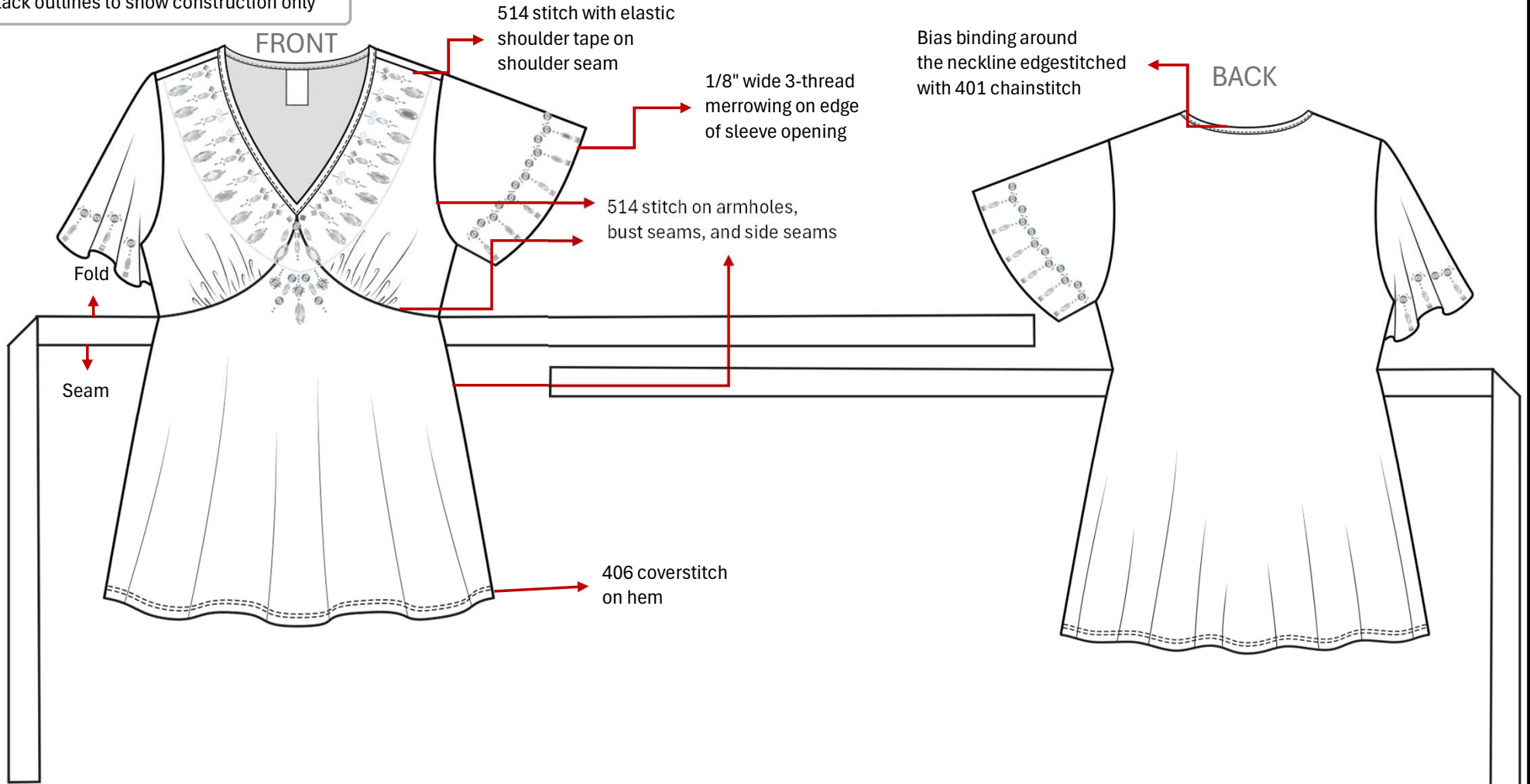


<b>BRAND:</b>	<b>SAMPLE DUE DATE:</b>	<b>MAIN FABRIC COMPOSITION:</b> Knit Jersey 95% Rayon / 5% Spandex
<b>SEASON / COLLECTION:</b>	<b>SAMPLE SIZE:</b>	<b>INNER LINING COMPOSITION:</b>
<b>DATE:</b>	<b>STYLE #:</b>	<b>COLORS:</b> Black / Red / Blue
<b>DESCRIPTION:</b> Short Sleeve Tieback Beaded Knit Top	<b>SIZE RANGE:</b> Missy (XS / S / M / L / XL) Womens (1X / 2X / 3X)	

### SKETCHES

Black outlines to show construction only



**NOTES:** Tiebacks are folded and 514 stitched on seams/folded edge toward the armhole/seam toward the hem.

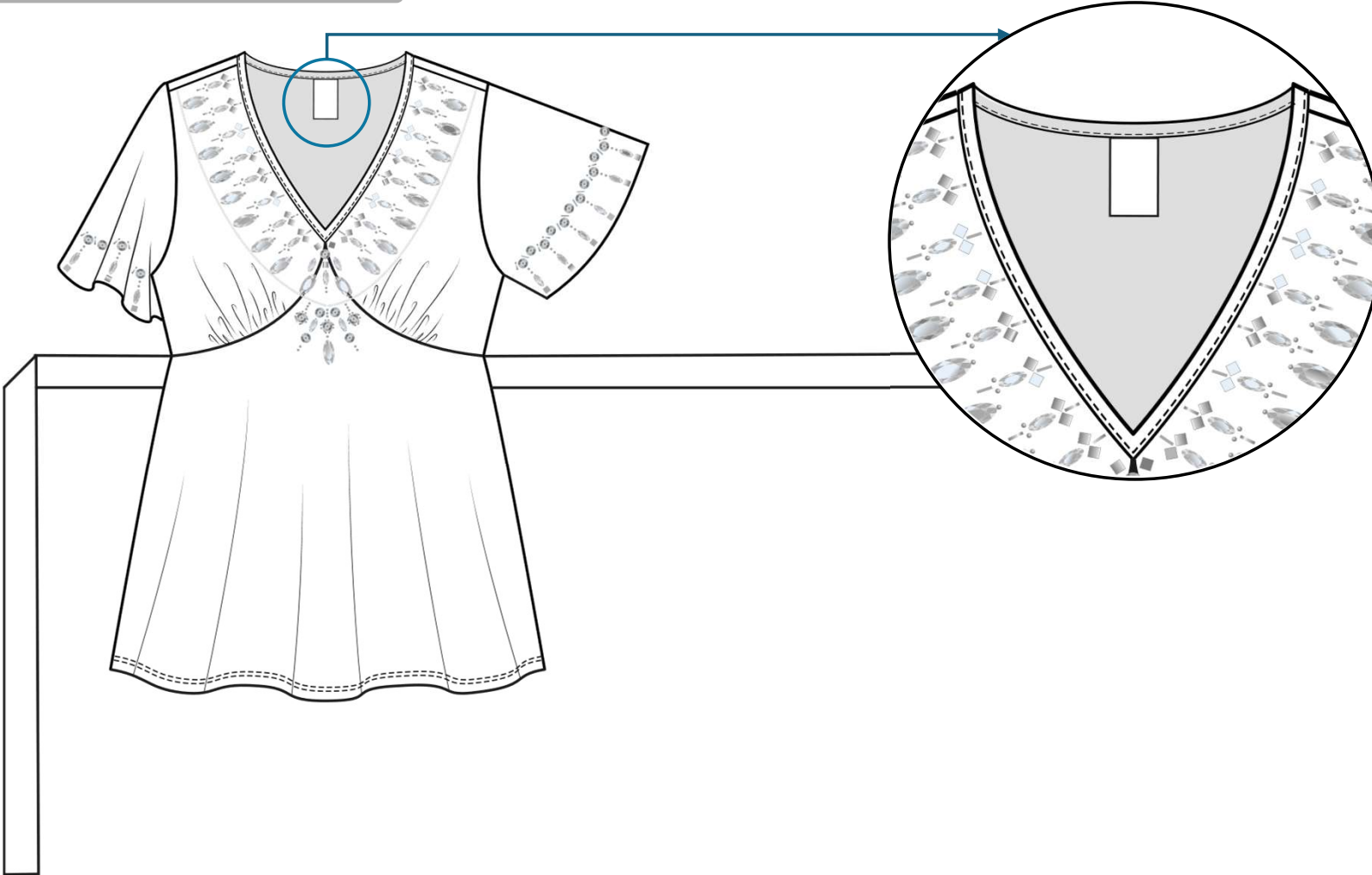
**FIT:**

SIZES	XS	S	M	L	XL	1X	2X	3X	TOTAL
COLORWAY #1: BLACK									
COLORWAY #2: RED									
COLORWAY #3: BLUE									
PIECES / SIZE QTY									

<b>BRAND:</b>	<b>SAMPLE DUE DATE:</b>	<b>MAIN FABRIC COMPOSITION:</b> Knit Jersey 95% Rayon / 5% Spandex
<b>SEASON / COLLECTION:</b>	<b>SAMPLE SIZE:</b>	<b>INNER LINING COMPOSITION:</b>
<b>DATE:</b>	<b>STYLE #:</b>	<b>COLORS:</b> Black / Red / Blue
<b>DESCRIPTION:</b> Short Sleeve Tieback Beaded Knit Top		<b>SIZE RANGE:</b> Missy (XS / S / M / L / XL) Womens (1X / 2X / 3X)

**SKETCHES**

Black outlines to show construction only



BRAND,  
COUNTRY OF ORIGIN,  
CARE, AND COMPOSITION  
LABEL. Joined at center back  
neck.

**NOTES:**

**FIT:**

<b>BRAND:</b>	<b>SAMPLE DUE DATE:</b>	<b>MAIN FABRIC COMPOSITION:</b> Knit Jersey 95% Rayon / 5% Spandex
<b>SEASON / COLLECTION:</b>	<b>SAMPLE SIZE:</b>	<b>INNER LINING COMPOSITION:</b>
<b>DATE:</b>	<b>STYLE #:</b>	<b>COLORS:</b> Black / Red / Blue
<b>DESCRIPTION:</b> Short Sleeve Tieback Beaded Knit Top		<b>SIZE RANGE:</b> Missy (XS / S / M / L / XL) Womens (1X / 2X / 3X)

**COLORWAYS**



**COLORWAY #1: BLACK**

**COLORWAY #2: RED**

 <b>FABRIC COLOR</b> BLACK	 <b>THREAD COLOR</b> DTM BLACK
---	--

 <b>FABRIC COLOR</b> RED	 <b>THREAD COLOR</b> DTM RED
--	--

<b>BRAND:</b>	<b>SAMPLE DUE DATE:</b>	<b>MAIN FABRIC COMPOSITION:</b> Knit Jersey 95% Rayon / 5% Spandex
<b>SEASON / COLLECTION:</b>	<b>SAMPLE SIZE:</b>	<b>INNER LINING COMPOSITION:</b>
<b>DATE:</b>	<b>STYLE #:</b>	<b>COLORS:</b> Black / Red / Blue
<b>DESCRIPTION:</b> Short Sleeve Tieback Beaded Knit Top		<b>SIZE RANGE:</b> Missy (XS / S / M / L / XL) Womens (1X / 2X / 3X)

**COLORWAYS**



**COLORWAY #3: BLUE**

**FABRIC COLOR**  
BLUE

**THREAD COLOR**  
DTM BLUE

<b>BRAND:</b>	<b>SAMPLE DUE DATE:</b>	<b>MAIN FABRIC COMPOSITION:</b> Knit Jersey 95% Rayon / 5% Spandex
<b>SEASON / COLLECTION:</b>	<b>SAMPLE SIZE:</b>	<b>INNER LINING COMPOSITION:</b>
<b>DATE:</b>	<b>STYLE #:</b>	<b>COLORS:</b> Black / Red / Blue
<b>DESCRIPTION:</b> Short Sleeve Tieback Beaded Knit Top		<b>SIZE RANGE:</b> Missy (XS / S / M / L / XL) Womens (1X / 2X / 3X)

### BILL OF MATERIALS

#### FABRICS

ITEM	TYPE	SUPPLIER	DESCRIPTION	COMPOSITION	COLORWAYS
A	MAIN FABRIC			95% Rayom / 5% Spandex	BLACK / RED / BLUE

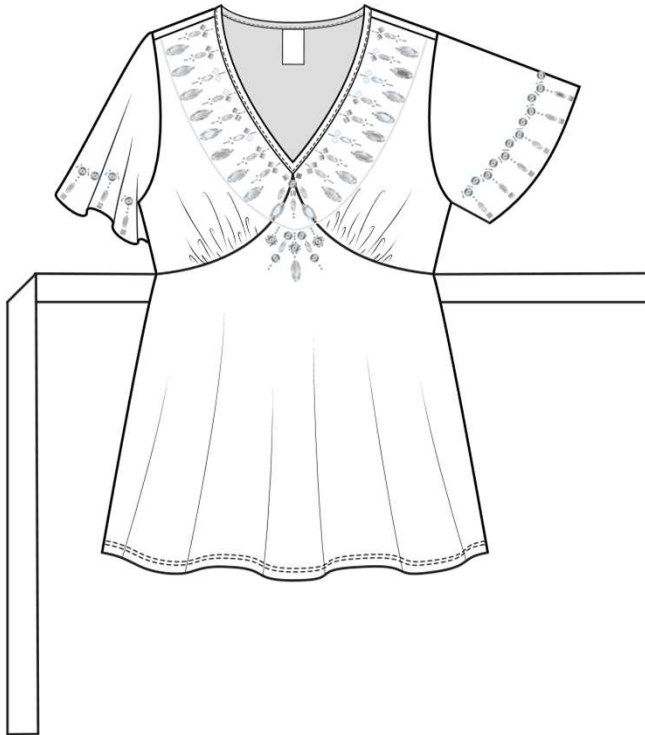
#### TRIMS

ITEM	TYPE	SUPPLIER	DESCRIPTION	PLACEMENT	QTY	COLORWAYS
B	GLASS BEADS		Seed beads, bugle beads	Varies by size	**	SILVER
C	RHINESTONES		Square, marquise, oval	Varies by size	**	CLEAR W/SILVER BACKING
D	SEQUINS		Cupped sequin	Varies by size	**	SILVER

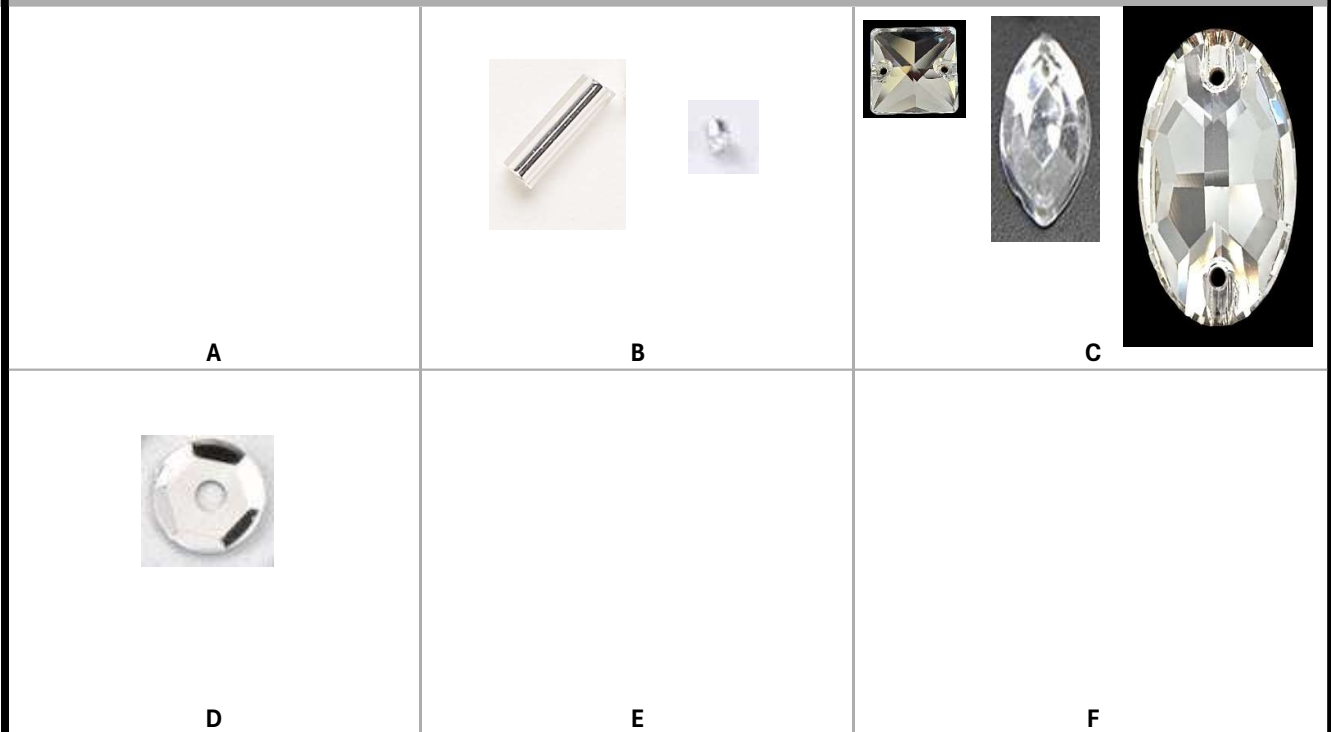
#### LABELS / HANGTAGS / PACKAGING

ITEM	TYPE	SUPPLIER	DESCRIPTION	PLACEMENT	QTY	COLORWAYS
E	BRAND, COUNTRY OF ORIGIN, COMPOSITION AND CARE LABEL			Center back neckline	1	WHITE
F	HANG TAG				1	WHITE

#### SKETCHES



#### SWATCHES



\*\* Determined by size

<b>BRAND:</b>	<b>SAMPLE DUE DATE:</b>	<b>MAIN FABRIC COMPOSITION:</b> Knit Jersey 95% Rayon / 5% Spandex
<b>SEASON / COLLECTION:</b>	<b>SAMPLE SIZE:</b>	<b>INNER LINING COMPOSITION:</b>
<b>DATE:</b>	<b>STYLE #:</b>	<b>COLORS:</b> Black / Red / Blue
<b>DESCRIPTION:</b> Short Sleeve Tieback Beaded Knit Top		<b>SIZE RANGE:</b> Missy (XS / S / M / L / XL) Womens (1X / 2X / 3X)

**MEASUREMENTS (Missy)**

**Received:** \_\_\_\_\_ **Delivery:** \_\_\_\_\_ **Sent:** \_\_\_\_\_ **Size:** \_\_\_\_\_ **Pattern:** \_\_\_\_\_

**TOP**

**SAMPLE SIZE**

	<b>POM (MEASURED ON THE FLAT)</b>	<b>TOL +/-</b>	<b>XS</b>	<b>S</b>	<b>M</b>	<b>L</b>	<b>XL</b>
<b>1</b>	Neck width						
<b>2</b>	Front neck drop (HPS to center front)						
<b>3</b>	Back neck drop (HPS to center back)						
<b>4</b>	Shoulder Slope						
<b>5</b>	Across Shoulder						
<b>6</b>	Across Front (X" from HPS)						
<b>7</b>	Across Back (X" from HPS)						
<b>8</b>	Armhole depth						
<b>9</b>	Sleeve length						
<b>10</b>	Underarm Sleeve length						
<b>11</b>	Upper Arm / Muscle (1" from AH)						
<b>12</b>	Sleeve opening						
<b>13</b>	Bust (1" below AH)						
<b>14</b>	Bust gather from side seam						
<b>15</b>	Bust gather length						
<b>16</b>	Under bust searm						
<b>17</b>	Bottom hem height						
<b>18</b>	Tieback length						
<b>19</b>	Tieback width						
<b>20</b>	Bottom sweep						
<b>21</b>							
<b>22</b>							
<b>23</b>							
<b>24</b>							
<b>25</b>							
<b>26</b>							
<b>27</b>							
<b>28</b>							
<b>29</b>							
<b>30</b>							
<b>31</b>							

<b>BRAND:</b>	<b>SAMPLE DUE DATE:</b>	<b>MAIN FABRIC COMPOSITION:</b> Knit Jersey 95% Rayon / 5% Spandex
<b>SEASON / COLLECTION:</b>	<b>SAMPLE SIZE:</b>	<b>INNER LINING COMPOSITION:</b>
<b>DATE:</b>	<b>STYLE #:</b>	<b>COLORS:</b> Black / Red / Blue
<b>DESCRIPTION:</b> Short Sleeve Tieback Beaded Knit Top		<b>SIZE RANGE:</b> Missy (XS / S / M / L / XL) Womens (1X / 2X / 3X)

**MEASUREMENTS (Womens)**

<b>Received:</b>	<b>Delivery:</b>	<b>Sent:</b>	<b>Size:</b>	<b>Pattern:</b>
------------------	------------------	--------------	--------------	-----------------

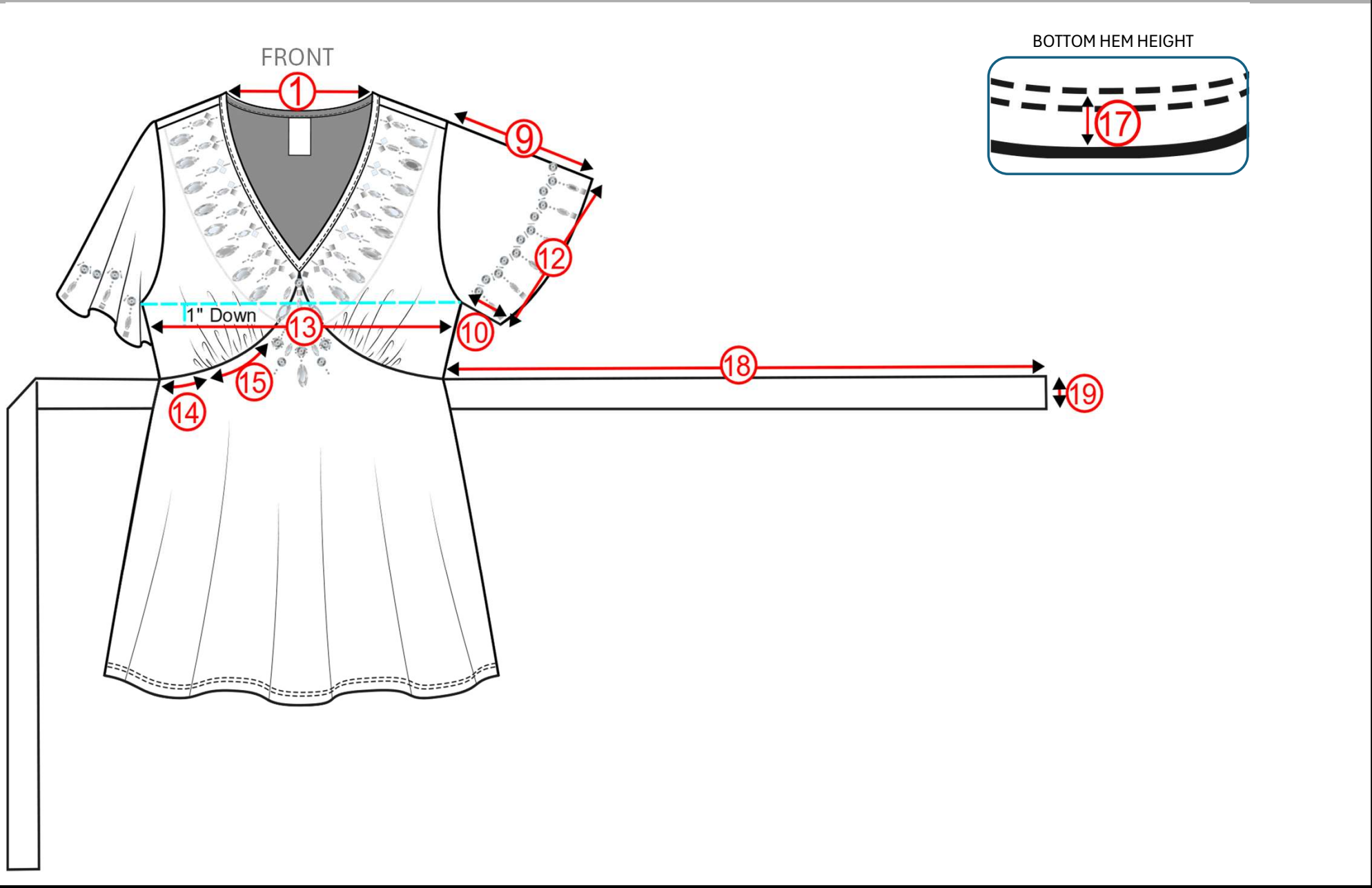
**TOP**

Sample Size

<b>POM (MEASURED ON THE FLAT)</b>		<b>TOL +/-</b>	<b>1X</b>	<b>2X</b>	<b>3X</b>				
<b>1</b>	Neck width								
<b>2</b>	Front neck drop (HPS to center front)								
<b>3</b>	Back neck drop (HPS to center back)								
<b>4</b>	Shoulder Slope								
<b>5</b>	Across Shoulder								
<b>6</b>	Across Front (X" from HPS)								
<b>7</b>	Across Back (X" from HPS)								
<b>8</b>	Armhole depth								
<b>9</b>	Sleeve length								
<b>10</b>	Underarm Sleeve length								
<b>11</b>	Upper Arm / Muscle (1" from AH)								
<b>12</b>	Sleeve opening								
<b>13</b>	Bust (1" below AH)								
<b>14</b>	Bust gather from side seam								
<b>15</b>	Bust gather length								
<b>16</b>	Under bust searm								
<b>17</b>	Bottom hem height								
<b>18</b>	Tieback length								
<b>19</b>	Tieback width								
<b>20</b>	Bottom sweep								
<b>21</b>									
<b>22</b>									
<b>23</b>									
<b>24</b>									
<b>25</b>									
<b>26</b>									
<b>27</b>									
<b>28</b>									
<b>29</b>									
<b>30</b>									
<b>31</b>									

<b>BRAND:</b>	<b>SAMPLE DUE DATE:</b>	<b>MAIN FABRIC COMPOSITION:</b> Knit Jersey 95% Rayon / 5% Spandex
<b>SEASON / COLLECTION:</b>	<b>SAMPLE SIZE:</b>	<b>INNER LINING COMPOSITION:</b>
<b>DATE:</b>	<b>STYLE #:</b>	<b>COLORS:</b> Black / Red / Blue
<b>DESCRIPTION:</b> Short Sleeve Tieback Beaded Knit Top		<b>SIZE RANGE:</b> Missy (XS / S / M / L / XL) Womens (1X / 2X / 3X)

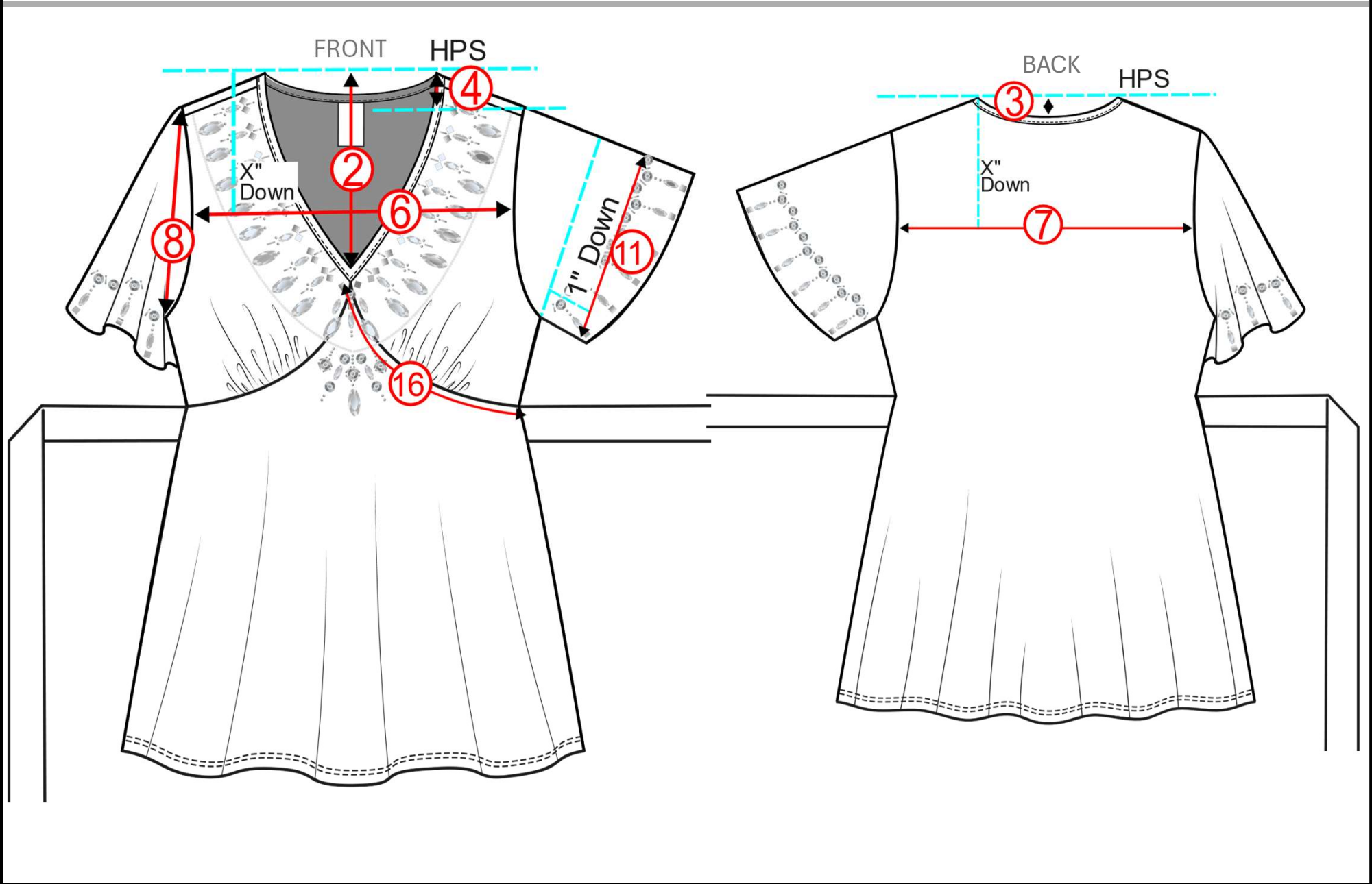
**POINT OF MEASUREMENT**





<b>BRAND:</b>	<b>SAMPLE DUE DATE:</b>	<b>MAIN FABRIC COMPOSITION:</b> Knit Jersey 95% Rayon / 5% Spandex
<b>SEASON / COLLECTION:</b>	<b>SAMPLE SIZE:</b>	<b>INNER LINING COMPOSITION:</b>
<b>DATE:</b>	<b>STYLE #:</b>	<b>COLORS:</b> Black / Red / Blue
<b>DESCRIPTION:</b> Short Sleeve Tieback Beaded Knit Top		<b>SIZE RANGE:</b> Missy (XS / S / M / L / XL) Womens (1X / 2X / 3X)

**POINT OF MEASUREMENT**



<b>BRAND:</b>	<b>SAMPLE DUE DATE:</b>	<b>MAIN FABRIC COMPOSITION:</b> Knit Jersey 95% Rayon / 5% Spandex
<b>SEASON / COLLECTION:</b>	<b>SAMPLE SIZE:</b>	<b>INNER LINING COMPOSITION:</b>
<b>DATE:</b>	<b>STYLE #:</b>	<b>COLORS:</b> Black / Red / Blue
<b>DESCRIPTION:</b> Short Sleeve Tieback Beaded Knit Top		<b>SIZE RANGE:</b> Missy (XS / S / M / L / XL) Womens (1X / 2X / 3X)

**POINT OF MEASUREMENT**

