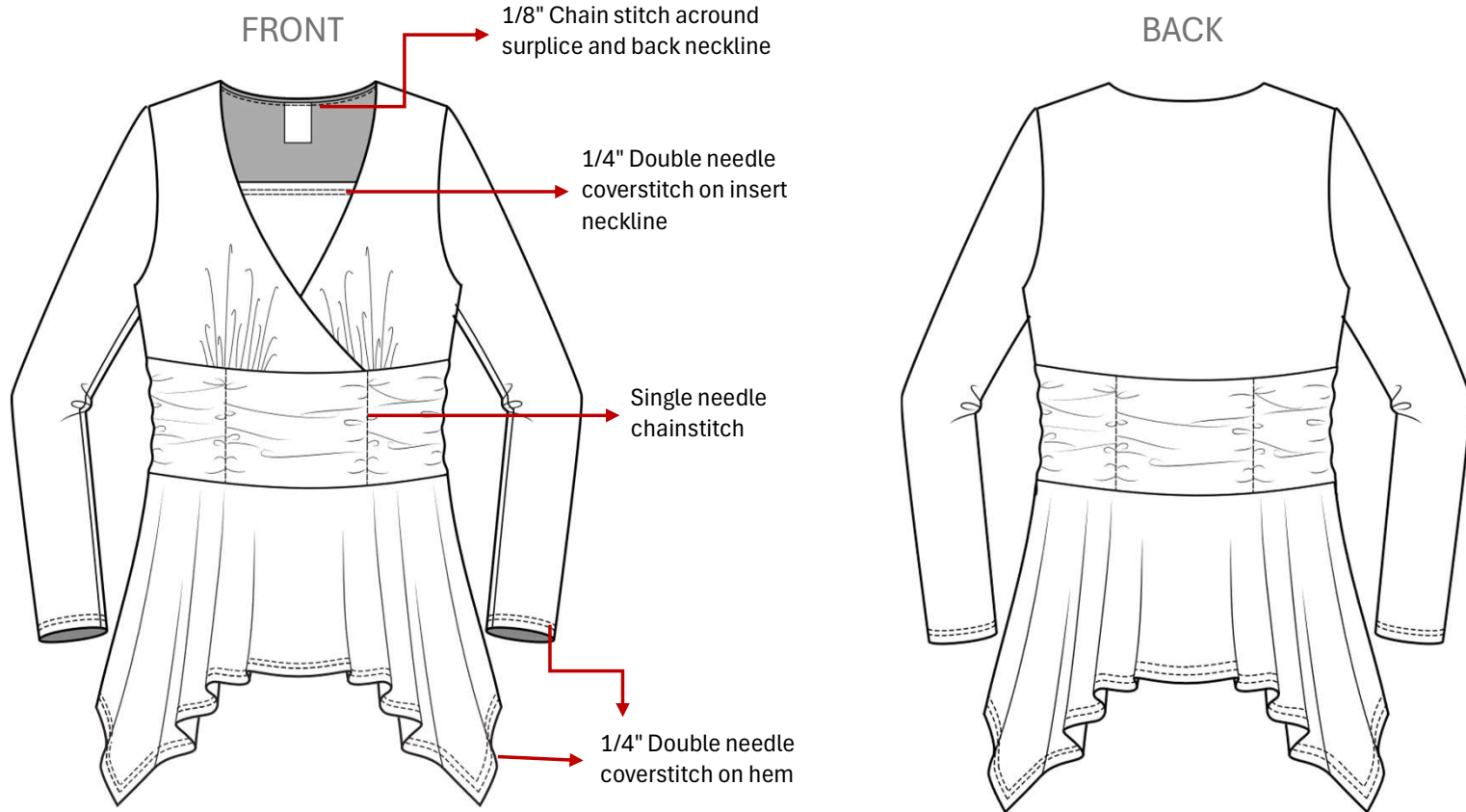


BRAND:	SAMPLE DUE DATE:	MAIN FABRIC COMPOSITION: ITY Knit Jersey 95% Polyester / 5% Spandex
SEASON / COLLECTION:	SAMPLE SIZE:	INNER LINING COMPOSITION:
DATE:	STYLE #:	COLORS: Black / Red / Blue
DESCRIPTION: Surplice ITY Ruched Waist Handkerchief Hem Top		SIZE RANGE: Missy (XS / S / M / L / XL) Womens (1X / 2X / 3X)

SKETCHES

Black outlines to show construction only



NOTES: Waist is double layered. Outer layer is ruched, inner layer is flat.

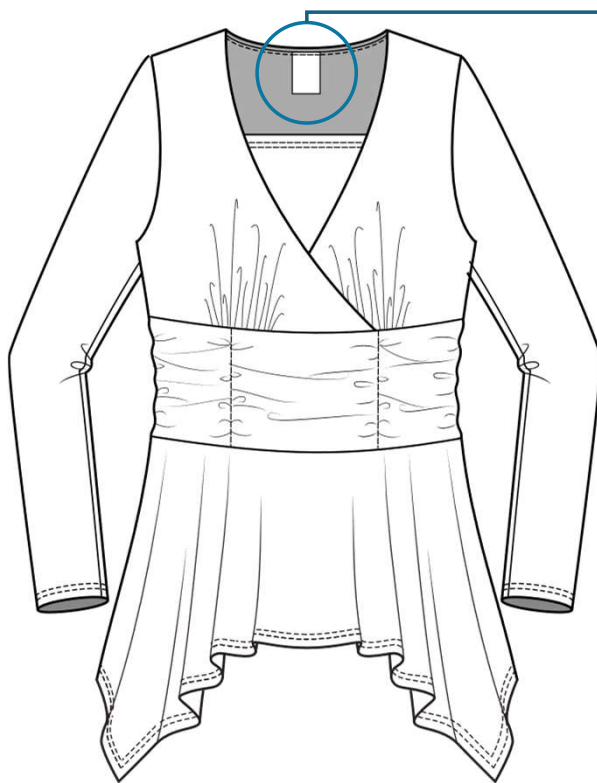
FIT:

SIZES	XS	S	M	L	XL	1X	2X	3X	TOTAL
COLORWAY #1: BLACK									
COLORWAY #2: RED									
COLORWAY #3: BLUE									
PIECES / SIZE QTY									

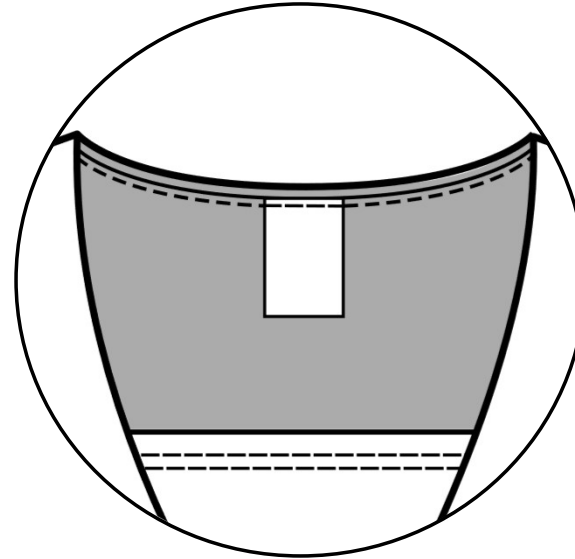
BRAND:	SAMPLE DUE DATE:	MAIN FABRIC COMPOSITION: ITY Knit Jersey 95% Polyester / 5% Spandex
SEASON / COLLECTION:	SAMPLE SIZE:	INNER LINING COMPOSITION:
DATE:	STYLE #:	COLORS: Black / Red / Blue
DESCRIPTION: Surplice ITY Ruched Waist Handkerchief Hem Top		SIZE RANGE: Missy (XS / S / M / L / XL) Womens (1X / 2X / 3X)

SKETCHES

Black outlines to show construction only



BRAND,
COUNTRY OF ORIGIN,
CARE, AND COMPOSITION
LABEL. Joined at center back
neck.



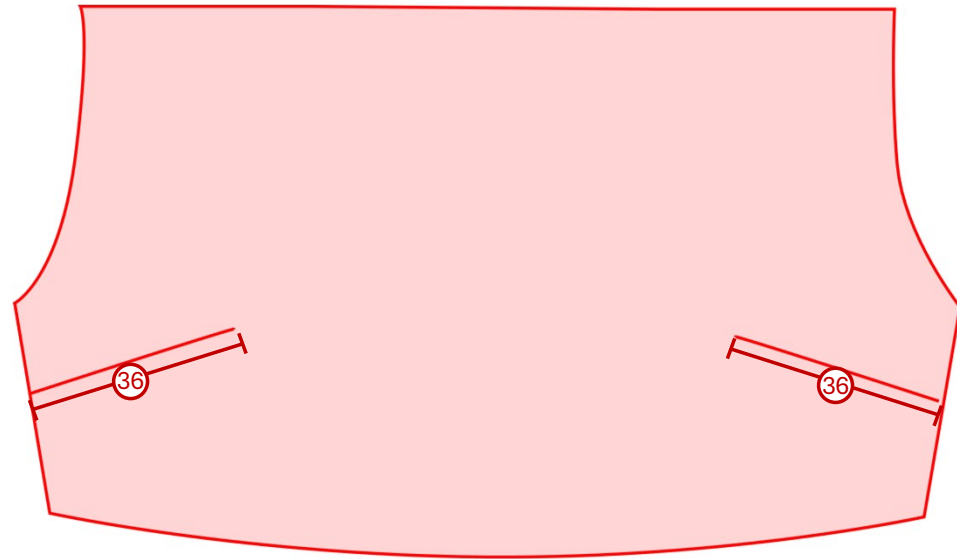
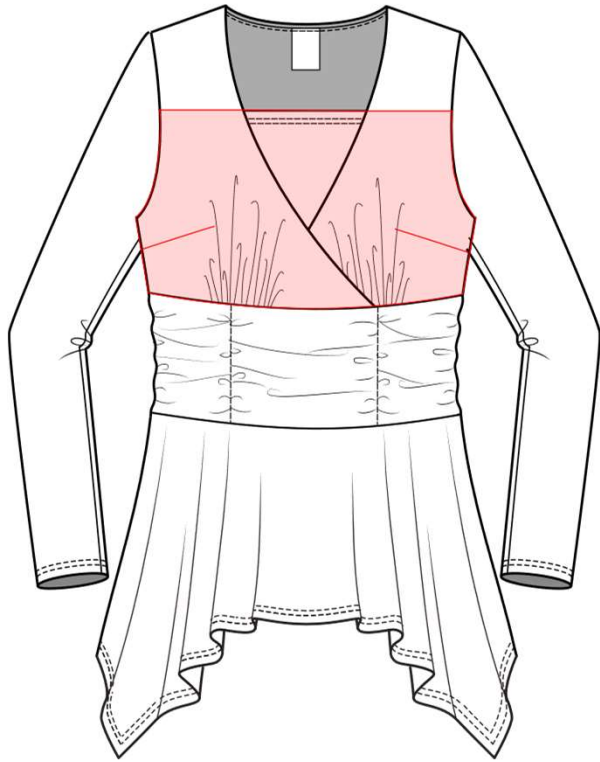
NOTES:

FIT:

BRAND:	SAMPLE DUE DATE:	MAIN FABRIC COMPOSITION: ITY Knit Jersey 95% Polyester / 5% Spandex
SEASON / COLLECTION:	SAMPLE SIZE:	INNER LINING COMPOSITION:
DATE:	STYLE #:	COLORS: Black / Red / Blue
DESCRIPTION: Surplice ITY Ruched Waist Handkerchief Hem Top		SIZE RANGE: Missy (XS / S / M / L / XL) Womens (1X / 2X / 3X)

FRONT BODICE INSERT CONSTRUCTION DETAILS

Black outlines to show construction only



FRONT BODICE INSERT BUST DART DIMENSIONS
*SEE MEASUREMENTS CHART

NOTES: Made of same ITY Knit Jersey

FIT:

BRAND:	SAMPLE DUE DATE:	MAIN FABRIC COMPOSITION: ITY Knit Jersey 95% Polyester / 5% Spandex
SEASON / COLLECTION:	SAMPLE SIZE:	INNER LINING COMPOSITION:
DATE:	STYLE #:	COLORS: Black / Red / Blue
DESCRIPTION: Surplice ITY Ruched Waist Handkerchief Hem Top		SIZE RANGE: Missy (XS / S / M / L / XL) Womens (1X / 2X / 3X)

COLORWAYS



COLORWAY #1: BLACK

COLORWAY #2: RED

FABRIC COLOR
BLACK

THREAD COLOR
DTM BLACK

INSERT COLOR
BLACK

FABRIC COLOR
RED

THREAD COLOR
DTM RED

INSERT COLOR
RED

BRAND:	SAMPLE DUE DATE:	MAIN FABRIC COMPOSITION: ITY Knit Jersey 95% Polyester / 5% Spandex
SEASON / COLLECTION:	SAMPLE SIZE:	INNER LINING COMPOSITION:
DATE:	STYLE #:	COLORS: Black / Red / Blue
DESCRIPTION: Surplice ITY Ruched Waist Handkerchief Hem Top		SIZE RANGE: Missy (XS / S / M / L / XL) Womens (1X / 2X / 3X)

COLORWAYS



COLORWAY #3: BLUE

FABRIC COLOR
BLUE

THREAD COLOR
BLUE

INSERT COLOR
BLUE

BRAND:	SAMPLE DUE DATE:	MAIN FABRIC COMPOSITION: ITY Knit Jersey 95% Polyester / 5% Spandex
SEASON / COLLECTION:	SAMPLE SIZE:	INNER LINING COMPOSITION:
DATE:	STYLE #:	COLORS: Black / Red / Blue
DESCRIPTION: Surplice ITY Ruched Waist Handkerchief Hem Top		SIZE RANGE: Missy (XS / S / M / L / XL) Womens (1X / 2X / 3X)

BILL OF MATERIALS

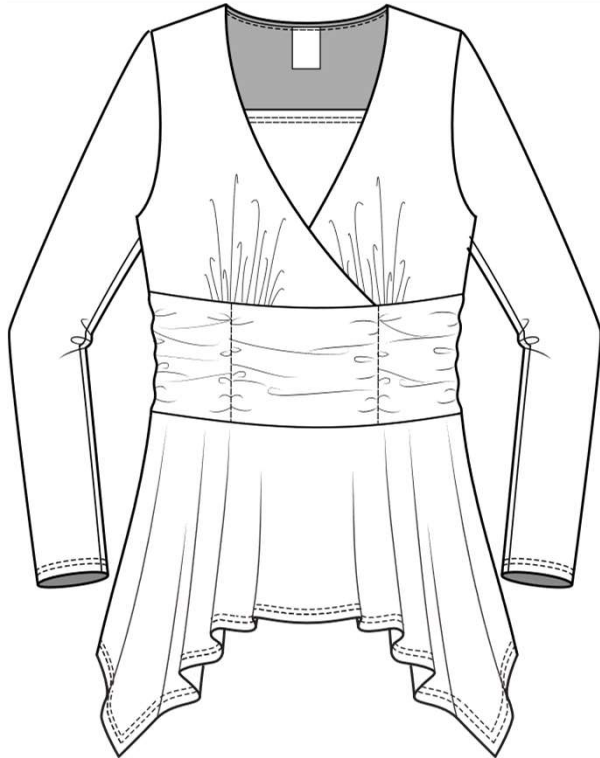
FABRICS

ITEM	TYPE	SUPPLIER	DESCRIPTION	COMPOSITION	COLORWAYS
A	MAIN FABRIC			95% Polyester / 5% Spandex	BLACK / RED / BLUE

LABELS / HANGTAGS / PACKAGING

ITEM	TYPE	SUPPLIER	DESCRIPTION	PLACEMENT	QTY	COLORWAYS
B	BRAND, COUNTRY OF ORIGIN, COMPOSITION AND CARE LABEL			Center back neckline	1	WHITE
C	HANG TAG				1	WHITE

SKETCHES



SWATCHES

A	B	C

BRAND:	SAMPLE DUE DATE:	MAIN FABRIC COMPOSITION: ITY Knit Jersey 95% Polyester / 5% Spandex
SEASON / COLLECTION:	SAMPLE SIZE:	INNER LINING COMPOSITION:
DATE:	STYLE #:	COLORS: Black / Red / Blue
DESCRIPTION: Surplice ITY Ruched Waist Handkerchief Hem Top		SIZE RANGE: Missy (XS / S / M / L / XL) Womens (1X / 2X / 3X)

MEASUREMENTS (Missy)

Received: _____ Delivery: _____ Sent: _____ Size: _____ Pattern: _____

TOP

SAMPLE SIZE

POM (MEASURED ON THE FLAT)	TOL +/-	XS	S	M	L	XL
1 Neck width						
2 Surplice front neck drop						
3 Back neck drop						
4 Shoulder slope						
5 Across shoulder						
6 Across front (X" from HPS)						
7 Across back (X" from HPS)						
8 Armhole depth						
9 Sleeve length						
10 Armhole (1" from AH)						
11 Sleeve opening						
12 Sleeve hem height						
13 Bust (1" below AH)						
14 Bust gather from side seam						
15 Bust gather length						
16 Under bust searm						
17 Waist seam						
18 Peplum length at center front (from waist seam to hem)						
19 Peplum length at side seam						
20 Peplum length from side seam to point						
21 Peplum width from point to point						
22 Bottom hem height						
23 Rouched band length (from bust seam to waist seam)						
24 Front ruched stitching placement from side seam						
25 Back ruched stitching placement from side seam						
26 Front ruching placement from HPS to center front						
27 Back ruching placement from HPS to center back						
28						
29						
30						
31						

BRAND:	SAMPLE DUE DATE:	MAIN FABRIC COMPOSITION: ITY Knit Jersey 95% Polyester / 5% Spandex
SEASON / COLLECTION:	SAMPLE SIZE:	INNER LINING COMPOSITION:
DATE:	STYLE #:	COLORS: Black / Red / Blue
DESCRIPTION: Surplice ITY Ruched Waist Handkerchief Hem Top		SIZE RANGE: Missy (XS / S / M / L / XL) Womens (1X / 2X / 3X)

MEASUREMENTS (Missy)

Received: _____ Delivery: _____ Sent: _____ Size: _____ Pattern: _____

TOP

SAMPLE SIZE

POM (MEASURED ON THE FLAT)	TOL +/-	XS	S	M	L	XL
32 INSERT:						
33 Insert hem height						
34 Insert front neck drop (HPS to top of insert)						
35 Insert bust dart from AH						
36 Insert bust dart length						
37 Insert bust dart depth						
38 Insert bust dart from HPS						
39						
40						
41						
42						
43						
44						
45						
46						
47						
48						
49						
50						
51						
52						
53						
54						
55						
56						
57						
58						
59						
60						
61						
62						

BRAND:	SAMPLE DUE DATE:	MAIN FABRIC COMPOSITION: ITY Knit Jersey 95% Polyester / 5% Spandex
SEASON / COLLECTION:	SAMPLE SIZE:	INNER LINING COMPOSITION:
DATE:	STYLE #:	COLORS: Black / Red / Blue
DESCRIPTION: Surplice ITY Ruched Waist Handkerchief Hem Top		SIZE RANGE: Missy (XS / S / M / L / XL) Womens (1X / 2X / 3X)

MEASUREMENTS (Womens)

Received: _____ **Delivery:** _____ **Sent:** _____ **Size:** _____ **Pattern:** _____

TOP

Sample Size

POM (MEASURED ON THE FLAT)	TOL +/-	1X	2X	3X			
1 Neck width							
2 Surplice front neck drop							
3 Back neck drop							
4 Shoulder slope							
5 Across shoulder							
6 Across front (X" from HPS)							
7 Across back (X" from HPS)							
8 Armhole depth							
9 Sleeve length							
10 Armhole (1" from AH)							
11 Sleeve opening							
12 Sleeve hem height							
13 Bust (1" below AH)							
14 Bust gather from side seam							
15 Bust gather length							
16 Under bust searm							
17 Waist seam							
18 Peplum length at center front (from waist seam to hem)							
19 Peplum length at side seam							
20 Peplum length from side seam to point							
21 Peplum width from point to point							
22 Bottom hem height							
23 Rouched band length (from bust seam to waist seam)							
24 Front ruched stitching placement from side seam							
25 Back ruched stitching placement from side seam							
26 Front ruching placement from HPS to center front							
27 Back ruching placement from HPS to center back							
28							
29							
30							
31							

BRAND:	SAMPLE DUE DATE:	MAIN FABRIC COMPOSITION: ITY Knit Jersey 95% Polyester / 5% Spandex
SEASON / COLLECTION:	SAMPLE SIZE:	INNER LINING COMPOSITION:
DATE:	STYLE #:	COLORS: Black / Red / Blue
DESCRIPTION: Surplice ITY Ruched Waist Handkerchief Hem Top		SIZE RANGE: Missy (XS / S / M / L / XL) Womens (1X / 2X / 3X)

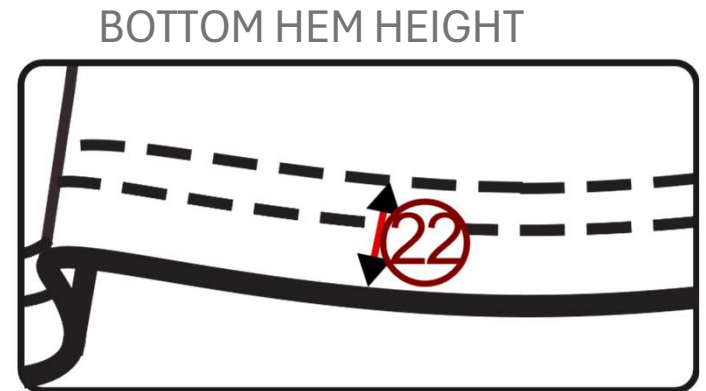
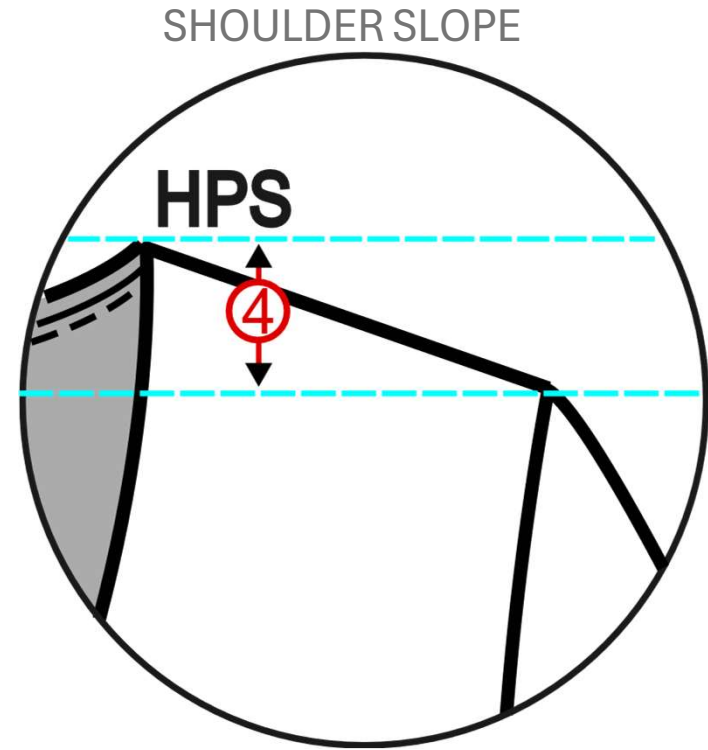
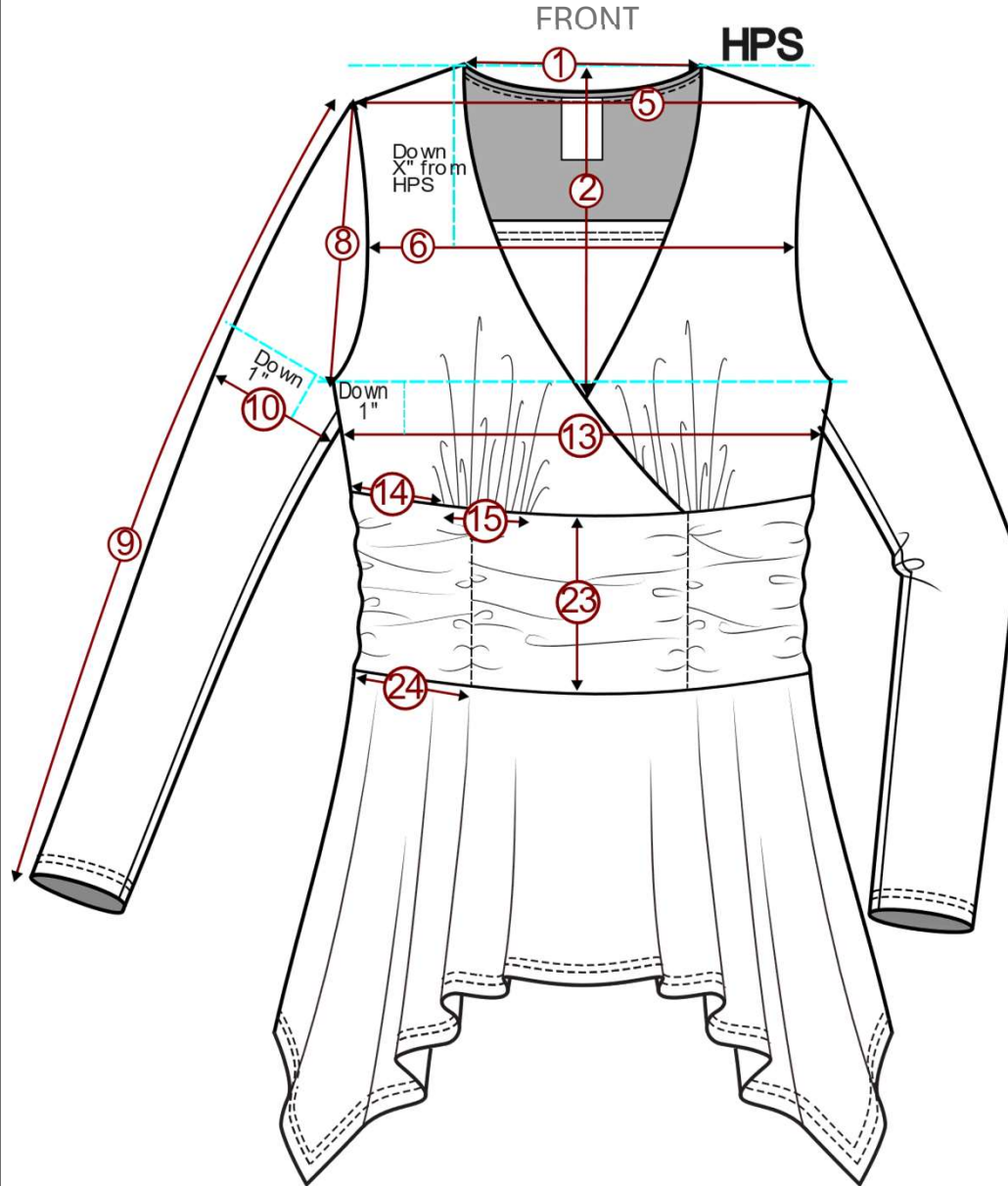
MEASUREMENTS (Womens)

Received: Delivery: Sent: Size: Pattern:

TOP		Sample Size						
	POM (MEASURED ON THE FLAT)	TOL +/-	1X	2X	3X			
32	INSERT:							
33	Insert hem height							
34	Insert front neck drop (HPS to top of insert)							
35	Insert bust dart from AH							
36	Insert bust dart length							
37	Insert bust dart depth							
38	Insert bust dart from HPS							
39								
40								
41								
42								
43								
44								
45								
46								
47								
48								
49								
50								
51								
52								
53								
54								
55								
56								
57								
58								
59								
60								
61								
62								

BRAND:	SAMPLE DUE DATE:	MAIN FABRIC COMPOSITION: ITY Knit Jersey 95% Polyester / 5% Spandex
SEASON / COLLECTION:	SAMPLE SIZE:	INNER LINING COMPOSITION:
DATE:	STYLE #:	COLORS: Black / Red / Blue
DESCRIPTION: Surplice ITY Ruched Waist Handkerchief Hem Top		SIZE RANGE: Missy (XS / S / M / L / XL) Womens (1X / 2X / 3X)

POINT OF MEASUREMENT



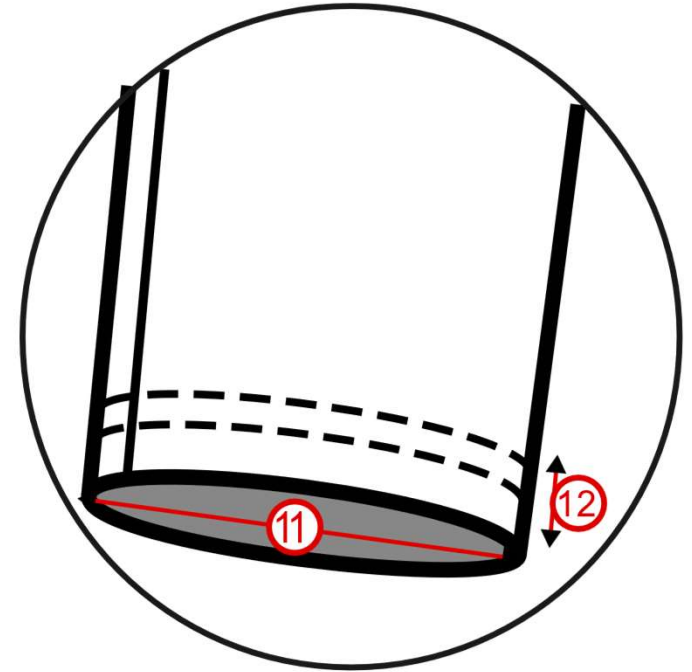
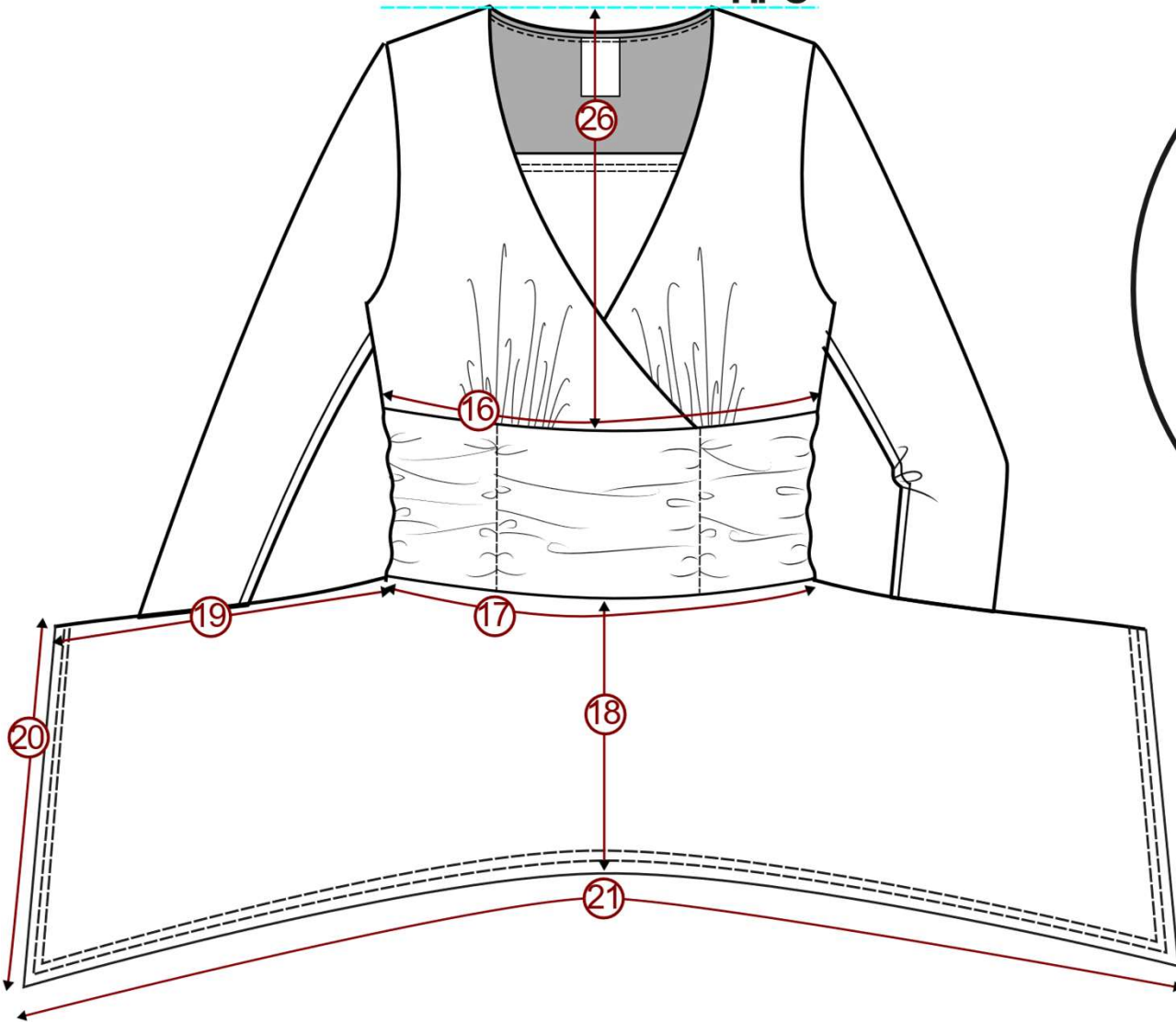
BRAND:	SAMPLE DUE DATE:	MAIN FABRIC COMPOSITION: ITY Knit Jersey 95% Polyester / 5% Spandex
SEASON / COLLECTION:	SAMPLE SIZE:	INNER LINING COMPOSITION:
DATE:	STYLE #:	COLORS: Black / Red / Blue
DESCRIPTION: Surplice ITY Ruched Waist Handkerchief Hem Top		SIZE RANGE: Missy (XS / S / M / L / XL) Womens (1X / 2X / 3X)

POINT OF MEASUREMENT

FRONT

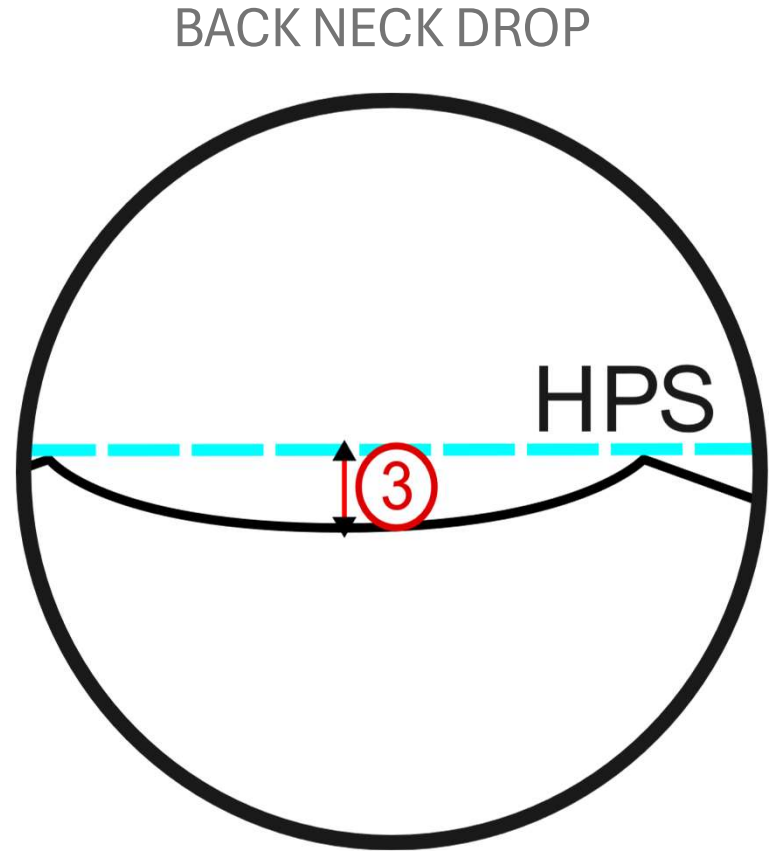
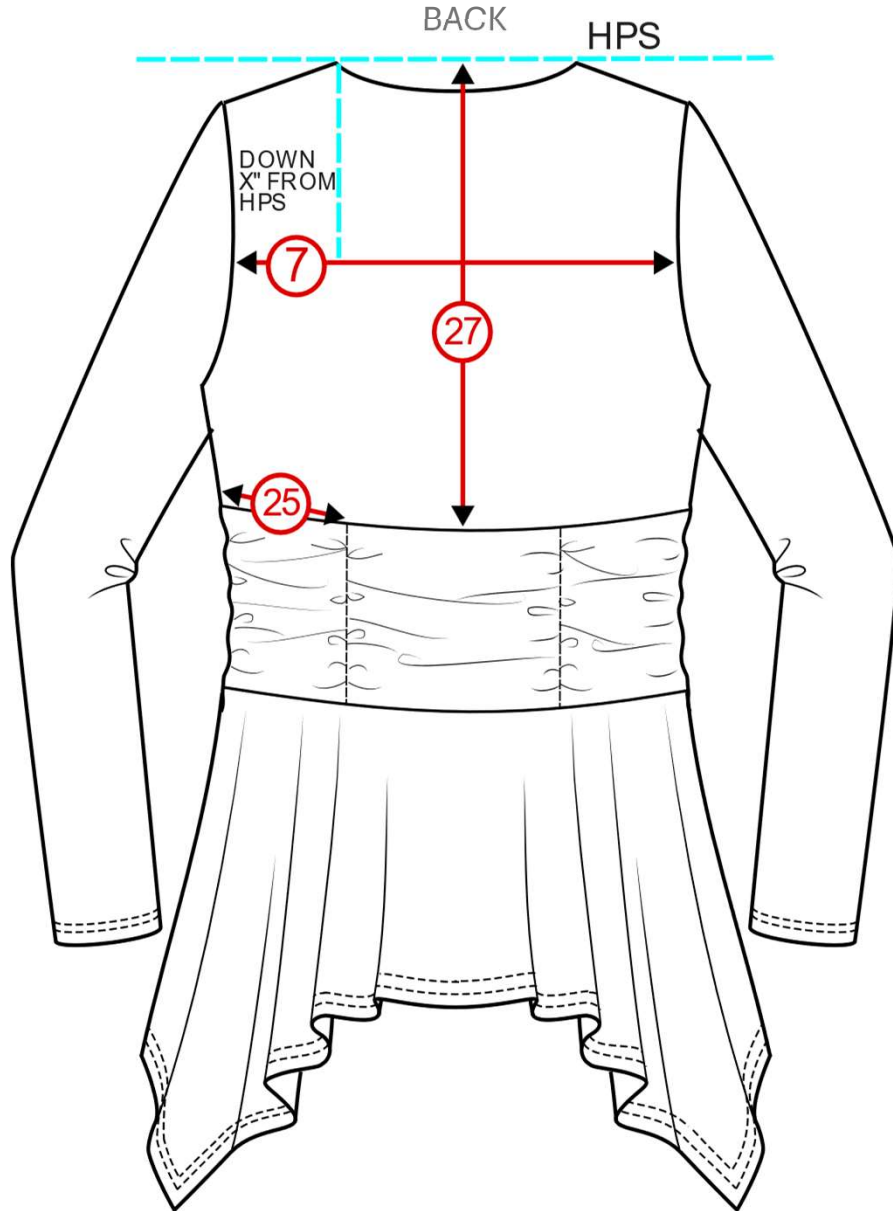
HPS

SLEEVE



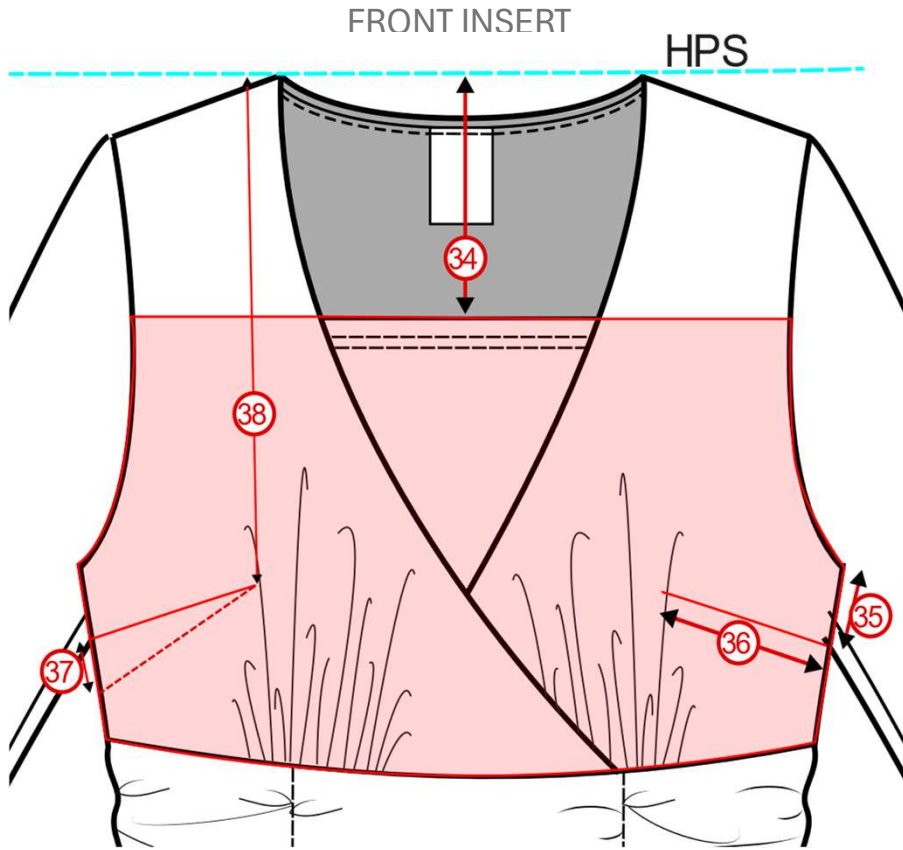
BRAND:	SAMPLE DUE DATE:	MAIN FABRIC COMPOSITION: ITY Knit Jersey 95% Polyester / 5% Spandex
SEASON / COLLECTION:	SAMPLE SIZE:	INNER LINING COMPOSITION:
DATE:	STYLE #:	COLORS: Black / Red / Blue
DESCRIPTION: Surplice ITY Ruched Waist Handkerchief Hem Top		SIZE RANGE: Missy (XS / S / M / L / XL) Womens (1X / 2X / 3X)

POINT OF MEASUREMENT



BRAND:	SAMPLE DUE DATE:	MAIN FABRIC COMPOSITION: ITY Knit Jersey 95% Polyester / 5% Spandex
SEASON / COLLECTION:	SAMPLE SIZE:	INNER LINING COMPOSITION:
DATE:	STYLE #:	COLORS: Black / Red / Blue
DESCRIPTION: Surplice ITY Ruched Waist Handkerchief Hem Top		SIZE RANGE: Missy (XS / S / M / L / XL) Womens (1X / 2X / 3X)

POINT OF MEASUREMENT



INSERT HEM HEIGHT

